



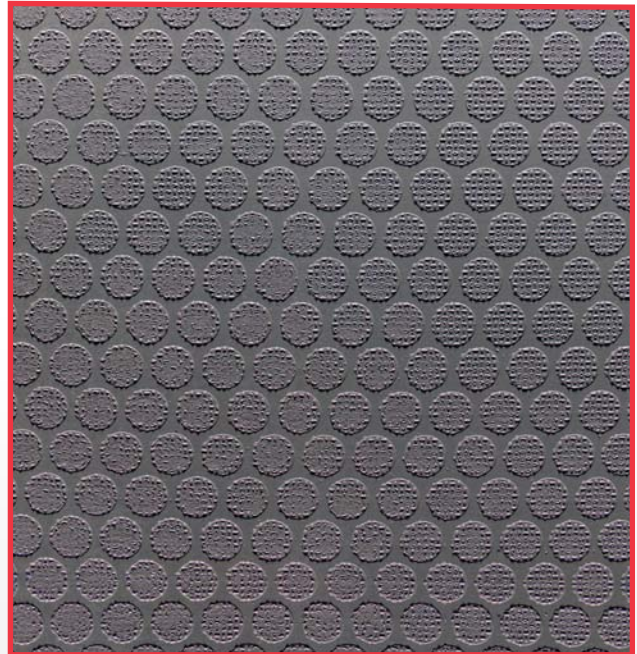
SINCE 1848

Nissan NV200 Van Equipment



Base Floor

- Sortimo floor forms the basis for in-vehicle Globelyst organizational system
- Crash tested floor provides a solid foundation and plays an integral part in the safety of the Globelyst system
- Floor is constructed of 9mm thick Nordic birchwood
- Sobogrip floor provides anti-slip surface and is resistant to cracks and stains
- Base floor includes tie down rings for proper cargo management
- Floor is pre-cut to custom fit the cargo area of the Nissan NV200



Double Floor

- Sortimo floor forms the basis for in-vehicle Globelyst organizational system
- Double floor creates additional storage space with rear and curb side access drawers while maintaining open cargo area by utilizing a “sub-floor”
- Two (2) small drawers and one (1) large drawer accessible from the rear cargo doors
- One (1) large drawer accessible from the curb side access door
- Each drawer includes three (3) dividers for further organization of drawer space



Curb Side View



Rear View

*39.6" L x 15.7" W x 7.7" H, large rear and side drawers,
39.6" L x 15.7" W x 3.7" H, small rear drawers

Van Partition

- One piece, thermoformed ABS van partition
- Custom fit to the interior of the Nissan NV200
- Lightweight materials provide minimal impact to payload
- Design allows ample seat travel for optimal comfort
- Wide angle Lexan glass provides clear view of the cargo area (models available with or without glass)
- Noise reduction decreases overall operator fatigue and increases safety
- Meets FMVSS 302 and 201U regulations and 49CFR393.114

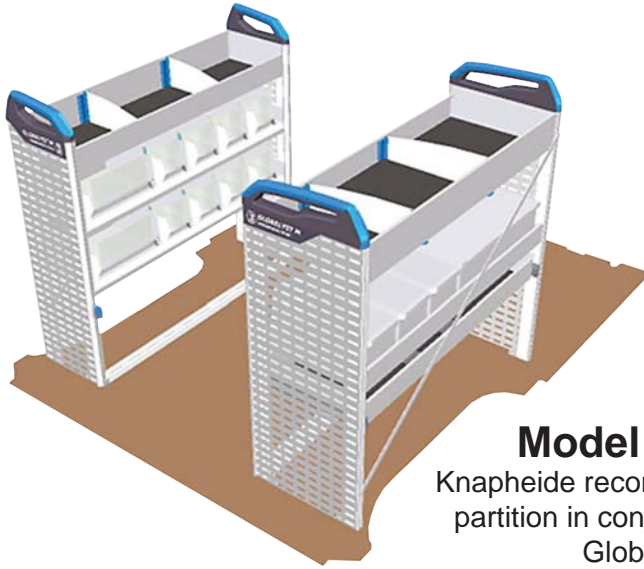


Wall Cladding

- Wall cladding protects the cargo area from damage such as impact dents and scratches
- Kit includes pieces to protect the side walls
- Sowaflex wall cladding is constructed from a lightweight honeycomb structural material with the entire kit weighing about 20 lbs. (60% less weight to comparable wood products)
- Surface of wall cladding is resistant to water and chemicals
- Wall cladding is pre-cut to custom fit the Nissan NV200 side walls



Standard Package



Model VA-SGS-NV

Knapheide recommends the use of a van partition in conjunction with a Sortimo® Globelyst package

Street Side

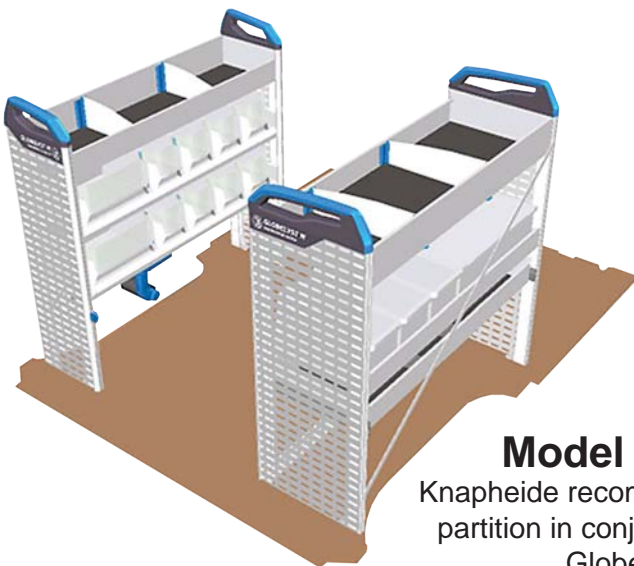
- Shelf with 1 Wide S-BOXX and 4 S-BOXXes
- Shelf with 1 Wide S-BOXX and 4 S-BOXXes
- Shelf with 2 dividers
- Lashing Rail



Curb Side

- 1 Drawer
- Shelf with 1 M-BOXX with lid and 3 S-BOXXes
- Shelf with 2 dividers
- Lashing Rail

Telecom Package



Model VA-SGT-NV

Knapheide recommends the use of a van partition in conjunction with a Sortimo® Globelyst package

Street Side

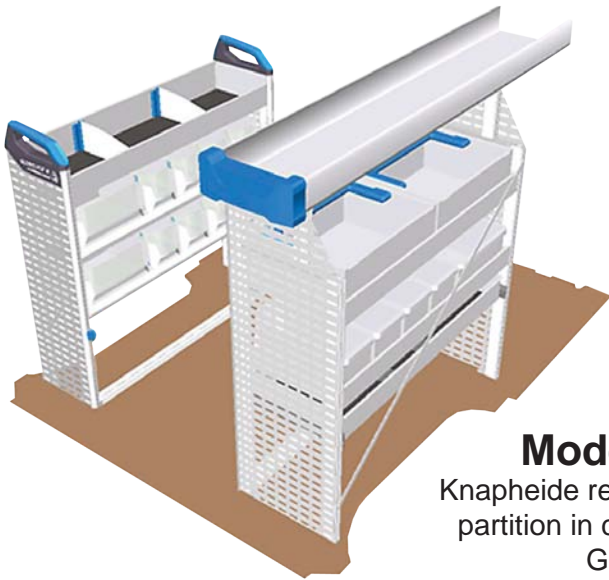
- Shelf with 1 Wide S-BOXX and 4 S-BOXXes
- Shelf with 1 Wide S-BOXX and 4 S-BOXXes
- Shelf with 2 dividers
- Case Clamp



Curb Side

- 1 Drawer
- Shelf with 1 M-BOXX with lid and 3 S-BOXXes
- Shelf with 2 dividers
- Lashing Rail

Electrician Package



Model VA-SGE-NV

Knapheide recommends the use of a van partition in conjunction with a Sortimo® Globelyst package

Street Side

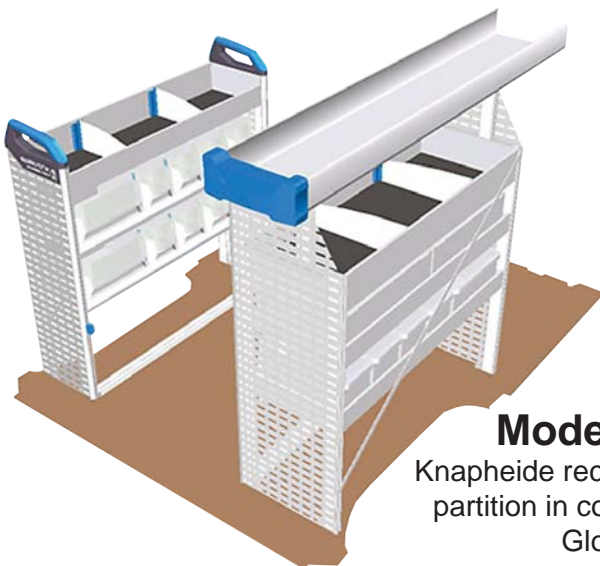
- Shelf with 1 Wide S-BOXX and 4 S-BOXXes
- Shelf with 1 Wide S-BOXX and 4 S-BOXXes
- Shelf with 2 dividers
- Lashing Rail



Curb Side

- 1 Drawer
- Shelf with 1 Wide S-BOXX and 4 S-BOXXes
- Shelf with 2 M-BOXXes
- Long Component Shelf
- Lashing Rail

Plumber/HVAC Package



Model VA-SGP-NV

Knapheide recommends the use of a van partition in conjunction with a Sortimo® Globelyst package

Street Side

- Shelf with 1 Wide S-BOXX and 4 S-BOXXes
- Shelf with 1 Wide S-BOXX and 4 S-BOXXes
- Shelf with 2 dividers
- Lashing Rail



Curb Side

- Shelf with 1 Wide S-BOXX and 4 S-BOXXes
- Shelf with 2 M-BOXXes
- Shelf with 2 dividers
- Long Component Shelf
- Lashing Rail

Courier Package

- Courier package is ideal for delivery, courier service, or catering applications
- Package includes Sobogrip floor, four (4) folding shelves, four (4) floor anchor points and two (2) straps located on each cargo side wall
- Each shelf has a load rating of 220 lbs. and can be vertically adjusted on 2" increments for desired configuration
- Shelves can be placed in the stow position to allow for maximum open cargo area for oversized items (pallets)



L-BOXX Accessories



L-BOXX – L-BOXXes are available in four different heights and can carry virtually anything from small hardware to large power tools. L-BOXXes can be stacked vertically and locked together. L-BOXXes slide in and out of Globelyst system with guiding tracks and are removable for transport.



LS-BOXX – LS-BOXXes enables the mobile technician to organize and carry a power tool, tool accessories, and needed hardware all in one box. LS-BOXXes can be stacked vertically and locked together. LS-BOXXes slide in and out of Globelyst system with guiding tracks and are removable for transport.



I-BOXX – I-BOXXes have a transparent lid and can be placed within the bottom storage area of a LS-BOXX. I-BOXXes slide in and out of Globelyst system with guiding tracks and are removable for transport.



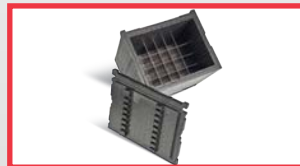
I-BOXX Wall Holder– Mounts directly to perforated Globelyst end panel. Wall Holder secures I-BOXX to end panel and offers quick and convenient access.



Inset Box Set – Plastic dividers that insert directly into the L-BOXX to help keep small parts organized.



Roller Transport – L-BOXX Roller has four swivel wheels for easy maneuverability. Two wheels have locks to keep L-BOXX roller in place. L-BOXXes lock into place at the base of the L-BOXX roller.



Insulated Insert – This insert for the L-BOXX is perfect for storing and transporting temperature sensitive materials. Includes metal egg crate divider.



Foam BOXX Insert – Foam inserts can be used inside each L-BOXX. They can be cut to offer customized protection for power tools, hand tools, etc.



Foam Lid Insert – Protects contents of insert boxes or thermoformed inserts from getting mixed up during transportation.



Small Parts Insert– Small parts insert made of thermoformed plastic. Three different versions available for economical organization solution for L-BOXXes.



Tool Holder – The tool holder fits into the lid of the L-BOXX with elastic loops and pockets for tools and offers quick and easy access to hand tools.

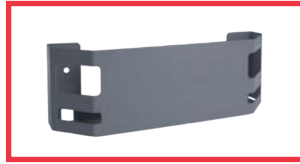


Protective Mat – This protective mat protects the L-BOXX and contents from damage.

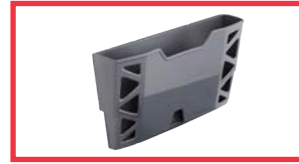
Globelyst Accessories



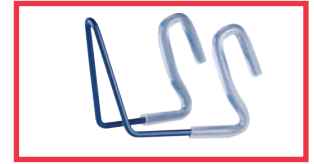
Cable Holder – Cable holder includes a business card holder and address pocket. Cable holder can be mounted to the perforated Globelyst end panel and stores cable or hoses that can be accessed easily.



Stowage Tray – Stowage tray is ideal for holding cans or small parts. It easily mounts to the perforated Globelyst end panel for convenient access from vehicle's side or rear cargo doors.



Document Storage Pocket– Document storage pocket securely stores brochures, job papers, receipts, etc. for quick and easy access. Pocket mounts directly to the perforated Globelyst end panel.



Shelf Hook – Shelf hook is a simple way to store hoses and electrical cables. Hook connects directly onto the side of long component tray or shelf tray and can be easily moved or adjusted quickly.



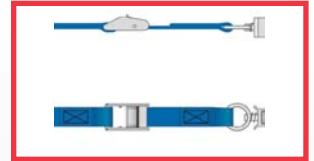
9 Piece Hook Set – 9 Piece Hook Set is ideal for storing a wide variety of tools and equipment off the cargo floor and out of the way. Hook set attaches to the oblong holes in the perforated Globelyst end panel.



Folding Workbench – Folding workbench turns the Globelyst system into a mobile workshop. Bench top dimensions are 7.7" W x 23.0" D x 1.2" H. Folding workbench attaches directly to the perforated Globelyst end panel.



Vise – Vise enhances the ability of the folding workbench. Vise jaw width is 5.5" and opening width is 8.5". Vise includes a pipe clamping jaw and mounts directly to folding workbench.



Lashing Strap w/ Buckle & ProSafe Hook – Lashing strap is ideal for securing cargo and has a ProSafe hook on both ends and a clamp buckle. Strap length is 55" with a maximum load of 450 pounds of force.



Lashing Strap w/ Ratchet & ProSafe Hook – Lashing strap is ideal for securing cargo and has a ProSafe hook on both ends and a ratchet tension lock. Strap length is 138" with a maximum load of 900 pounds of force.



ProSafe Lashing Channel – Lashing channel is designed to fasten to the side of the perforated Globelyst end panels. Lashing channel accepts ProSafe lashing straps and can secure gas bottles or other large items.



Universal ProSafe Hook– Universal ProSafe Hook has upper storage area for large pipes or ladder, middle for smaller pipes, and a lower hook for bags or clothing. Hook capacity is 35 pounds and mounts directly to vertical ProSafe lashing rails on Globelyst system.



Floor Vent– Vents provide proper ventilation of cargo area for safely transporting bottled gas. Vent options include the roof, side, and floor depending upon your ventilation requirements.



Roof Vent – Vents provide proper ventilation of cargo area for safely transporting bottled gas. Vent options include the roof, side, and floor depending upon your ventilation requirements.



S-BOXX – S-BOXXes come in a variety of sizes and are ideal for small to medium parts. S-BOXXes slide in and out of Globelyst system with guiding tracks and are removable for transport.



M-BOXX – M-BOXXes are available with or without lid, handle and dividers. M-BOXXes slide in and out of Globelyst system with guiding tracks and are removable for easy mobility to job site.



T-BOXX – T-BOXXes have a transparent lid to easily see the contents with a variety of available inset boxes. T-BOXXes slide in and out of Globelyst system with guiding tracks and are removable for transport.



T-BOXX Suspension Kit – Provides a storage area for the T-BOXX on the inside panel of the rear door.



ProSafe Screw Fitting – Allows you to create your own accessory to mount on the Globelyst packages. It fits into the slot of the ProSafe vertical or horizontal lashing rails and then you can bolt on the accessory or add-on.



ProSafe Tie Downs – Tie down rails offer economical cargo management solutions. Rail kits for the side walls and bulkhead available. Compatible ProSafe lashing straps.

Simpleco: Select Your Block & Location

- Simpleco is a simple and economical storage system for small commercial vans.
- Choose from two depths of Simpleco blocks, Block 33-BB-FW-FR (pictured left) accepts depth 3 BOXXes and Block 34-BB-FW-FR (pictured right) accepts Depth 4 BOXXes
- Each block includes top and middle divider shelf and bottom tray which accepts Sortimo BOXXes
- Determine where on the vehicle you would like to put the Simpleco block(s)
- Select the appropriate mounting kit for either the street side (Part #21918412) or curb side (Part #21918420) of your Nissan NV200



Simpleco® Block
33-BB-FW-FR



Simpleco® Block
34-BB-FW-FR

-OR-



Simpleco: Select Your BOXXes

Part Number	Description	Net. Wt.
26093815	Simpleco Box PKG 33-1, Includes (4) S-BOXX 03	3.2 lbs.
26093823	Simpleco Box PKG 33-2 Includes (1) Wide S-BOXX 03 & (2) S-BOXX 03	3.3 lbs.
26093831	Simpleco Box PKG 34-1, Includes (4) S-BOXX 04	6.4 lbs
26093849	Simpleco Bos PKG 34-2 Includes (1) Wide S-BOXX 04 & (2) S-BOXX 04	5.5 lbs.
26093856	Simpleco Box PKG 34-3 Includes (1) L-BOXX 136 & (1) S-BOXX 04	6.1 lbs

The Knapheide Manufacturing Company
1848 Westphalia Strasse
Quincy, Illinois 62305

(217) 222-7131

www.knapheide.com

knapheide@knapheide.com



For more information:



Specifications subject to change without notice.
Some models shown with optional equipment.